

INSIDE THIS EDITION

Planting Guide

Safe practices for planting trees or shrubs this spring.

■ PAGE 4

Meet & Greet

Come visit VVEC at the Tulsa Home & Garden Show.

■ PAGE 3

New!

Calendar of Events; Fun for Everyone!

■ PAGE 6

VVEC

POWER CIRCUIT

MARCH 2022 | PUBLISHED FOR THE MEMBERS OF VERDIGRIS VALLEY ELECTRIC COOPERATIVE | A SUPPLEMENT TO OKLAHOMA LIVING | WWW.VVEC.COM

Spring Storms Wreak Havoc

Staying Safe When Powerlines Are Down



In a matter of weeks spring will return, which also marks the return of severe thunderstorms. Strong straight line winds, falling trees, and lightning all become factors to potential power line damage. "We have an aggressive brush control program at VVEC, but large trees out of the right of way can still tear a line down when large limbs blow out of them or when the entire tree blows over." says VVEC's Director of

Operations, Randy Riddle. When storms are forecast for the area VVEC keeps all of our employees on alert and make contact with contractors to let them know we could be calling if the damage is significant. The most important thing for members to remember is to report your outage-especially if you have power line damage-and stay away from any downed power lines or poles. Please remember: just because a power line is on

the ground and you do not have electricity does not mean that the power line is de-energized. The best way to report an outage is through the SmartHub app on your phone (Download the free SmartHub on the App Store or Google Play) or online through our website (www.vvec.com). It beats a congested phone line when several hundred or even thousand members are trying to report an outage during a major event. ■



VVEC BOARD OF TRUSTEES

District 1: Jim Brackett - 720-4531

District 2: Jack Bogart - 371-9587

District 3: Vernon Lewis - 521-5461

District 4: John Hibdon - 847-2320

District 5: Jimmy Lambert - 760-7029

District 6: Dennis Lenox - 289-5961

District 7: Charles Huerter - 914-1498

District 8: Ken Howard - 724-9965

District 9: Buddy McCarty - 272-5134
or 272-5364

General Manager: Alice Lawson

CONTACT US

VVEC Headquarters

8901 E. 146th Street N., Collinsville

Mailing address

P.O. Box 219, Collinsville, OK 74021

Phone number

918-371-2584 or 1-800-870-5948

Office hours

7:30 a.m. to 4:00 p.m., Mon.-Fri.

Power Circuit Editor:

McKenzie Loffer

Power Circuit is published monthly by Verdigris Valley Electric Cooperative, Collinsville, Oklahoma (ISSN 10884378) for its members in Tulsa, Rogers, Washington, Nowata and Osage counties. Periodical postage paid at Tulsa, Oklahoma and other additional mailing offices. Subscription price is \$0.19 per month. POSTMASTER: Send address changes to Power Circuit, P.O. Box 219, Collinsville, OK 74021.

MARCH 2022

VOLUME 81 | NUMBER 3



EMPLOYEE SPOTLIGHT

Little did Danny Lemke know that on July 18, 1977, it would be the start of many years of countless nights and many days working in every type of weather keeping the lights on. More than 16,278 days, 390,672 hours have passed since that day. Danny began working in construction and continued for approximately six years before moving into the position of Lead Maintenance Lineman. He was then moved to Service Lineman where he worked for ten years before moving back to the position of Lead Maintenance Lineman. Danny continued to work as a Journeyman Lineman until assuming his new position of Powerline Contractor Coordinator upon the recent retirement of Boyd Schultheiss. Longevity of electric cooperative careers is a hallmark of the business. In the 44 years he has worked at VVEC, he has seen a lot of changes both in the field and with technology. Danny is now using all that experience and knowledge into doing the best job he can in working with and monitoring contractors progress to ensure it is to VVEC's standards. Danny said he is making sure the VVEC membership is getting their money's worth. Around the co-op, Danny is known as the Master Gardener and is generous with his bountiful harvest. We believe that Danny has made a substantial difference in the community by going the extra mile to keep the lights on. When asked what other work/career he would be in if not at VVEC, he replied "nothing, been doing this for 44 years, I'm going to be the author for the "Real Lineman" book, he smiles and says "I'm going to write it!" Danny's favorite quote is from Will Rogers, "If you like your job, you'll never work a day in your life".

Take Me Out to the Greater Tulsa

Home & Garden Show

While visiting the Greater Tulsa Home & Garden Show be sure to drop by the Green Country Electric Co-ops booth. Representatives from four Green Country Electric Cooperatives, including VVEC, will be on hand to visit with you about energy efficient practices, co-op services such as energy audits and rebates, and answer your questions. While you're there, be sure to grab some goodies!

The Greater Tulsa Home & Garden Show is Oklahoma's largest show of it's kind. The show is at the River Spirit Expo Center on the Tulsa Fairgrounds. It opens Thursday, March 10 and runs through Sunday, March 13. Admission is \$10 for adults, and kids 12 and under are free with a paid adult. Thursday and Friday only; seniors, first responders, military, and educators' tickets are \$5.

VVEC Member Services Representative Misti Frazier (pictured on the right) will be manning the booth Thursday, March 10 from 3pm to 8pm. It is booth 719 and can be found on Creekmore and corners of Guthrie and Frisco. See you at the show! ■



Turn Green in Just 24 Hours

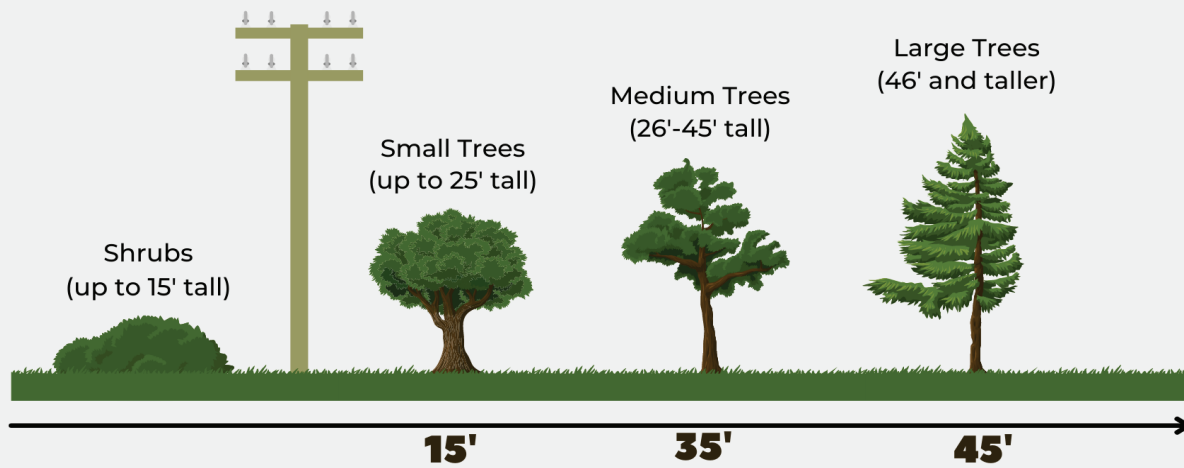
St. Patrick's Day is the one day every year when everything from decorations to clothes to food seems to turn green. This year, make March 17 the day you start making "greener" choices around your home to save energy, the environment, and money.

A few quick starters:

- Install a programmable thermostat that will moderate the heat and air conditioning when your family is sleeping or away for the day.
- Replace traditional lightbulbs with energy-saving light bulbs.
- Air dry dishes instead of using your dishwasher's drying cycle.
- Plug home electronics, such as TVs and DVD players, into power strips; turn the power strips off when the equipment is not in use. TVs and DVDs in standby mode still use electricity.
- Take quick showers instead of baths.
- Wash only full loads of dishes and clothes.

Plant the **RIGHT TREE** in the **RIGHT PLACE**

The larger the tree, the farther it should be from a power line. Avoid planting beneath power lines, near poles or close to electrical equipment.



Remember, know what's below by calling 8-1-1 before you dig.

SAFETY TIP

Reminders For Spring Planting

Whether planting trees to provide a wind break, shade, reduce carbon in the environment, or to beautify your landscape, Safe Electricity reminds everyone of the importance of planting tall-growing trees safely away from power lines.

To avoid future electrical hazards, safe planting tips include:

- Consider mature height of trees. Never plant a tree that could grow

to 25 feet or more near a power line. Tall growing trees should be planted at least 20 feet away from power lines and 50 feet away to avoid future pruning. A mature height of less than 15 feet is recommended for trees planted near power lines.

- Do not plant near underground utility services. Tree roots can grow to interfere with underground pipes, cables, and wires. Future repairs to these facilities also could

damage the health and beauty of nearby plants and trees.

- Keep areas around electric meters, transformers, or other electrical equipment free of any vegetation that could limit utility service access.

- Before digging, call the local underground utility locator service to mark location of underground utilities, so accidental contact, damage, and injuries can be avoided.

Source: safeelectricity.org

Average Monthly Payment Plan

If your electric bill fluctuates from month to month, you might want to try the Average Monthly Payment Plan. The AMP Plan is available to VVEC members who meet all the following criteria:

- Have been a VVEC member for at least 12 months;
- Have not been late in paying the electric bill more than twice during the previous 12 months;
- The electric bill is currently paid in full.

Your average monthly payment is figured by taking your current

month's usage plus the preceding 11 months' usage and dividing them by 12. This total is then figured into the applicable rate along with any taxes and plus or minus one-twelfth of your balance forward.

The average is recalculated every month in the same manner.

If you are interested in participating in the AMP Plan or have any questions, please call our billing department at 918-371-2584, Monday through Friday, 7:30 AM - 4:00 PM.



Source: energy.gov



Scan this code to fill out a Home Energy Audit request form!

What is the Customer Charge ?

When you look at your monthly electric bill you see the cost of the electricity you used during that billing period. There is also another amount that doesn't change from month to month as your usage does. That is the customer charge. You may be wondering what exactly is the customer charge?

There are costs associated with being able to deliver electric service to a location before even one kiloWatt-hour of electricity is used. This is what is covered by the customer charge.

Those include the cost of the meter, wire, poles, and other equipment used to deliver electricity. There are also costs involved with maintaining that location's equipment, and repairing or replacing it when necessary, and the customer charge covers those.

If you have any questions about any charges on your electric bill, please call VVEC's consumer services representatives at 918-371-2584. They are available from 7:30 AM - 4:00 PM. Monday through Friday. ■



March

Calendar of Events



5th - Shamrock the Ville 5K, Fun Run & Walk benefitting Mary Martha Outreach, Bartlesville, OK

10th - Greater Tulsa Home & Garden Show. Riverspirit Expo at Tulsa's Expo Square. 10:00 AM - 8:00 PM

11th - Greater Tulsa Home & Garden Show. Riverspirit Expo at Tulsa's Expo Square. 10:00 AM - 8:00 PM

12th - Greater Tulsa Home & Garden Show. Riverspirit Expo at Tulsa's Expo Square. 10:00 AM - 8:00 PM

13th - Greater Tulsa Home & Garden Show. Riverspirit Expo at Tulsa's Expo Square. 10:00 AM - 5:00 PM

17th - Lilac District St. Paddy's Party, 11:00 AM- 10:00 PM, Downtown Claremore. Fun for the whole family!

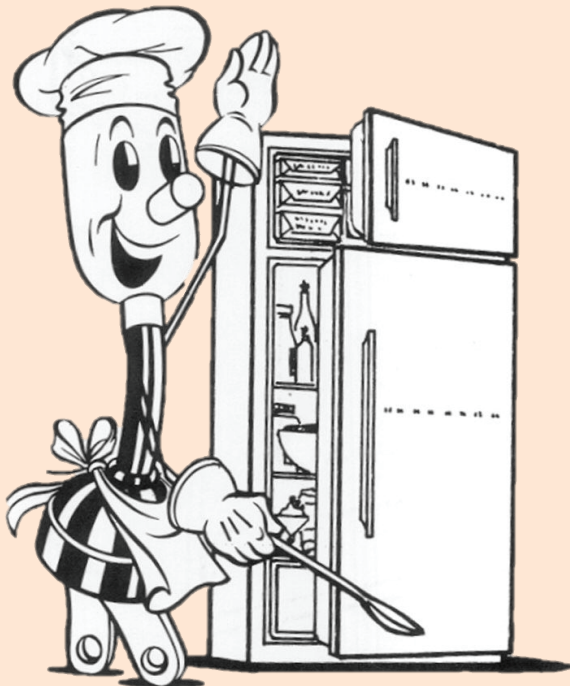
19th - Native American Art Market hosted by the Delaware Tribe of Indians, 8:00 AM - 12:30 PM, 5100 Tuxedo Blvd. Bartlesville, OK

25th - Claremore Home and Garden Show, 10:00 AM - 7:00 PM, Claremore Expo Center

26th - Claremore Home and Garden Show, 9:00 AM- 6:00 PM, Claremore Expo Center

Willie's Throwback Recipe

Pretzels With Zip



- 2 lbs. pretzels
- 1 tbsp. lemon pepper
- 1 tbsp. garlic powder
- 2 tbsp. cayenne pepper
- 1 pkg. dry ranch mix
- 1 to 1 1/2 cup(s) oil

Mix dry ingredients. Add oil to dry mix; stir. Put pretzels in small garbage bag. Pour mixture over pretzels. Shake to coat. Spread pretzels out on paper towels until dry. (The towels will absorb a lot of the oil.)

Submitted by: Jeannie Winton of Skiatook,
Published in The Servin' Spoon III

CLASSIFIEDS

SUBMIT ADS to classified@vvec.com or send to Attn: Classified, P.O. Box 219, Collinsville, OK 74021. Ads must be in writing. Your account number, name, address and a phone number is required on all ads.

The deadline for all ads is the 1st of the month. Ads submitted by the 1st of the month will run in the following month's newsletter.

Classified ads are a free service to VVEC members only. As many ads as space allows will be included in each issue. VVEC reserves the right to delete or shorten items or descriptions.

- Dog grooming. Professional, personalized, at your home. Certified master groomer with over 40 years' experience. Most dogs only \$40. Contact 918-381-1170.
- Crosby music box with wood cabinet. Play CDs, cassettes, records or radio. \$50. Contact 918-381-1170.
- Native Bluestem Prairie Hay. No chemicals. Square baled. \$8. Contact 918-504-6264.
- Old fashioned porcelain dolls. Most only \$20. Contact 918-381-1170.
- Bits, spurs and other tack. Contact Kenneth Dotham at 918-695-0344.
- Depression glass cameo "ballerina" green. Over 60 pieces. Contact Howard Denegar at 918-857-3336.
- Porcelain dolls. Many styles and types. Most dolls only \$20.00. Several Indian dolls \$30.00. Contact 918-381-1170
- White chenille bedspread. Full/queen. \$20. Contact 918-381-1170.
- Cookstove with double oven. White with grey trim. Works great; very nice. Contact 918-255-6508.
- Bits, spurs, and other tack for sale. Contact 918-695-0344
- Native Bluestem Prairie Hay, no chemicals. SQ. Baled. \$8.00 Contact 918-504-6264
- Depression Glass Cameo "Ballerina" Green. Over 60 pieces. Contact 918-857-3336



Time to Spring Ahead

Remember Daylight Savings Time Begins Sunday, March 13 at 2:00 AM. You will need to set your clocks ahead one hour (spring forward).

Fire Departments recommend replacing the batteries in your smoke detector(s) at this time.



Adopt-A-School and **Rural Fire Department** grant applications are due **April 27th**. To Download an application form visit www.vvec.com, and click on the community programs tab. Contact program coordinator **Misti Frazier** at 918-371-2584, ext. 6226 or mfrazier@vvec.com, for more information.

Myth or Fact? Be Sure For Power Line Safety

If birds can touch electrical wires, are they safe for people, too? If you're not on a metal ladder, are you clear of danger from powerline electrocution? Know for sure before you take a chance with your life.

First the facts: Electricity is always looking for the shortest and easiest path to the ground - including people and objects that or come close to power lines. Electricity is fast, and it can cause severe burns or death if it flows through the human body.

Myth: Wires must be safe to touch if birds can land on them. **Fact:** Birds don't represent a direct path

to the ground, giving electricity nowhere to go but back to the wire.

Myth: Power lines are safe to touch because they are insulated. **Fact:** Most lines are insultaed only to protect against slight tree contact, but not enough to prevent human energy. **Myth:** Non-metal ladders are safe to rest on a power line.

Fact: Anything that can get wet can conduct electricity, and many non-metal ladders still contain metal parts. Keep your ladder away from power lines, no matter what it is made of. **Myth:** Trimming trees around a power line is safe. **Fact:** Electricity doesn't need metal to conduct. The moisture in the tree

is enough. If a tree comes into contact with the line while you're trimming, it has a direct path to the ground through the tree, your pruning tool and you. If you feel there are tree branches dangerously close to electric lines, please call us and let us work with our right-of-way contractors to safely trim the trees. ■



WINTER RESIDENTIAL RATES

October through March usage;
November through April billing

Customer Charge | \$30.00

Energy Charge | \$.07772/kWh

A power cost adjustment (PCA) will be applied to all bills when the actual cost of power purchased exceeds or is less than 59.87 mills per kWh.

In addition, a gross receipts tax of 2% of revenue will be included, plus additional taxes if applicable.

This institution is an equal opportunity provider & employer.

IN CASE OF AN OUTAGE

- First, check your fuses or circuit breakers. Every service is different. You may have fuses or circuit breakers in your house, on the side of your house, under your meter, or all three places. Check to see if your neighbors have electricity.
- Then, call the co-op at 371-2584, or 1-800-870-5948. Have your account number, name as it appears on the account, and address handy to give to the dispatcher. If you should get a recording, leave your information; every message will be answered.
- Download the SmartHub app at www.smarthubapp.com to report outages from your smartphone.



**FIND US ON
FACEBOOK**

for outage updates & more



**REPORT OUTAGES
WITH SMARTHUB**

Scan here to download

